

X = Switch Cluster

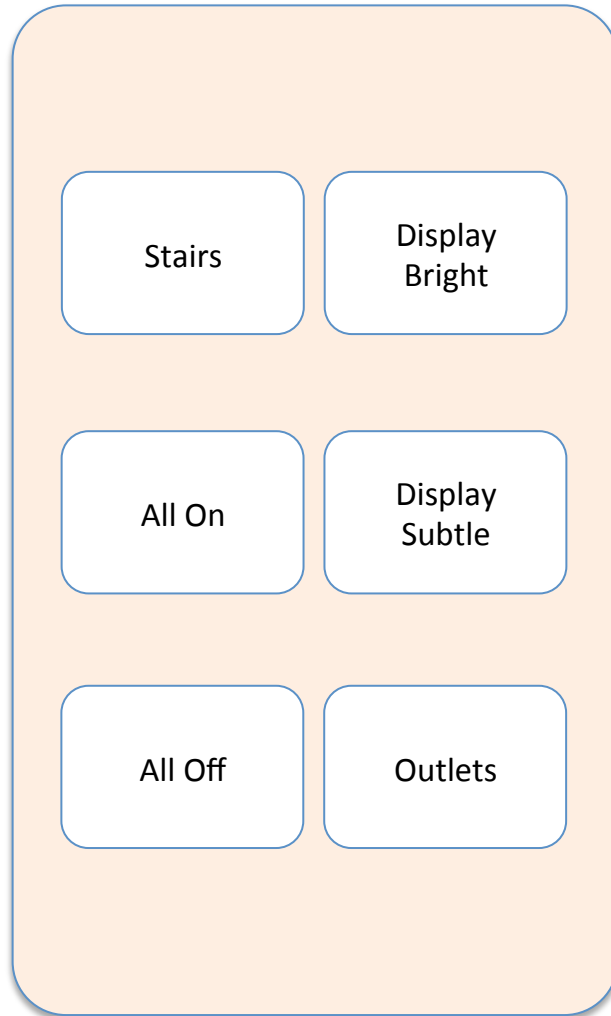
Shared with
"2E-Laundry &
Mud Room"
(Below Ledge)

Keypad Location 2K-A

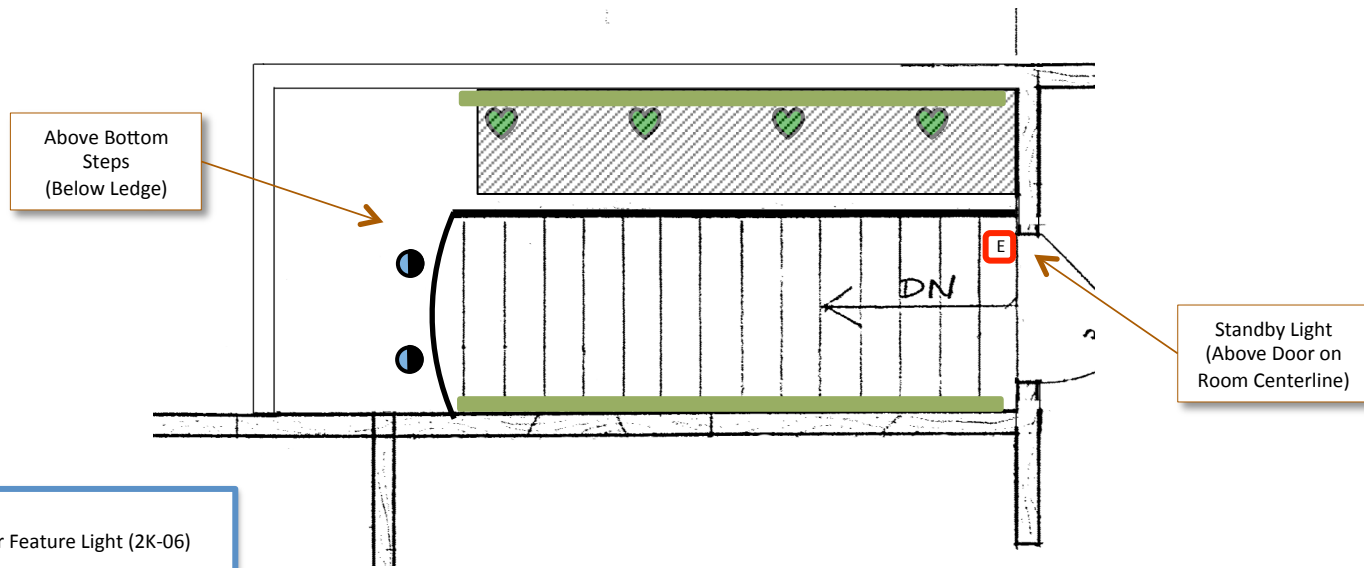







Stairway: 5 Light Controls
Mud Room: 2 Light Controls

Keypad Location 2K-B

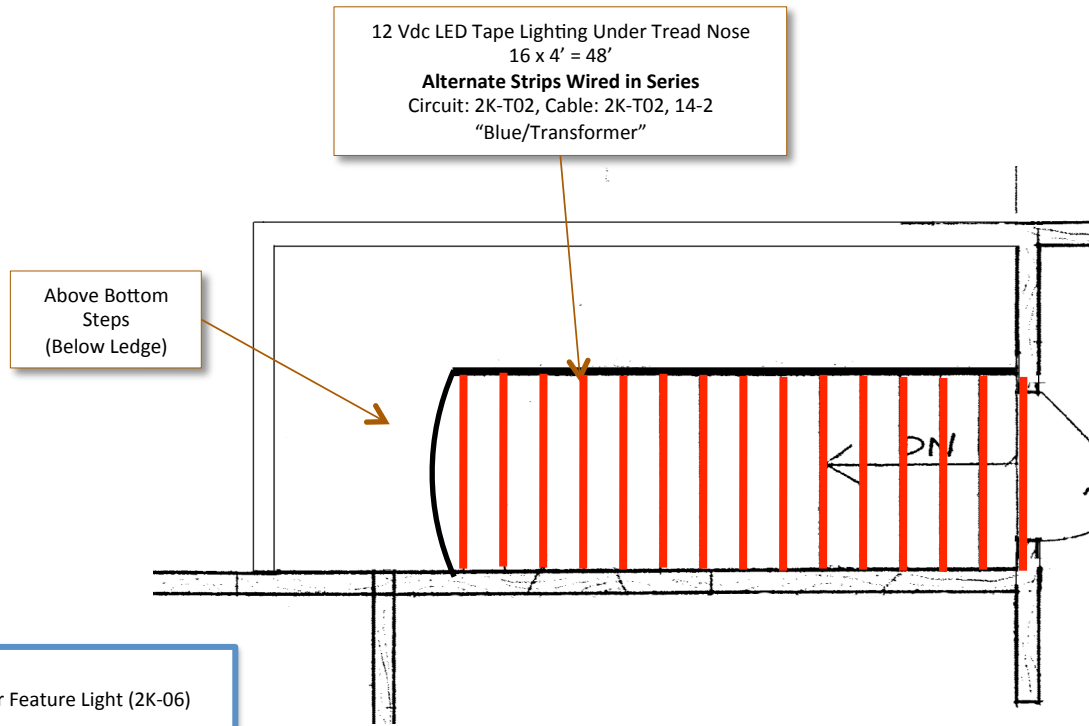








Stairway: 5 Light Controls

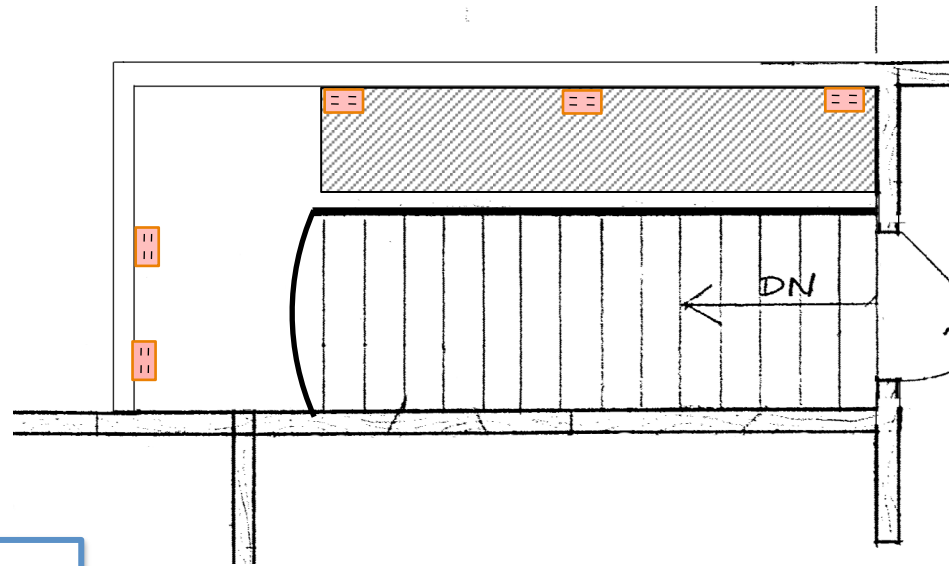


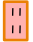
-  = In-Floor Feature Light (2K-06)
-  = Tread Light (2K-02)
-  = Ceiling Wash Lighting (2K-03)
(~30 lineal ft)
-  = Cabinet Interior Lighting (2K-04)
-  = Standby Light

Note: (2K-06) = Circuit Branch

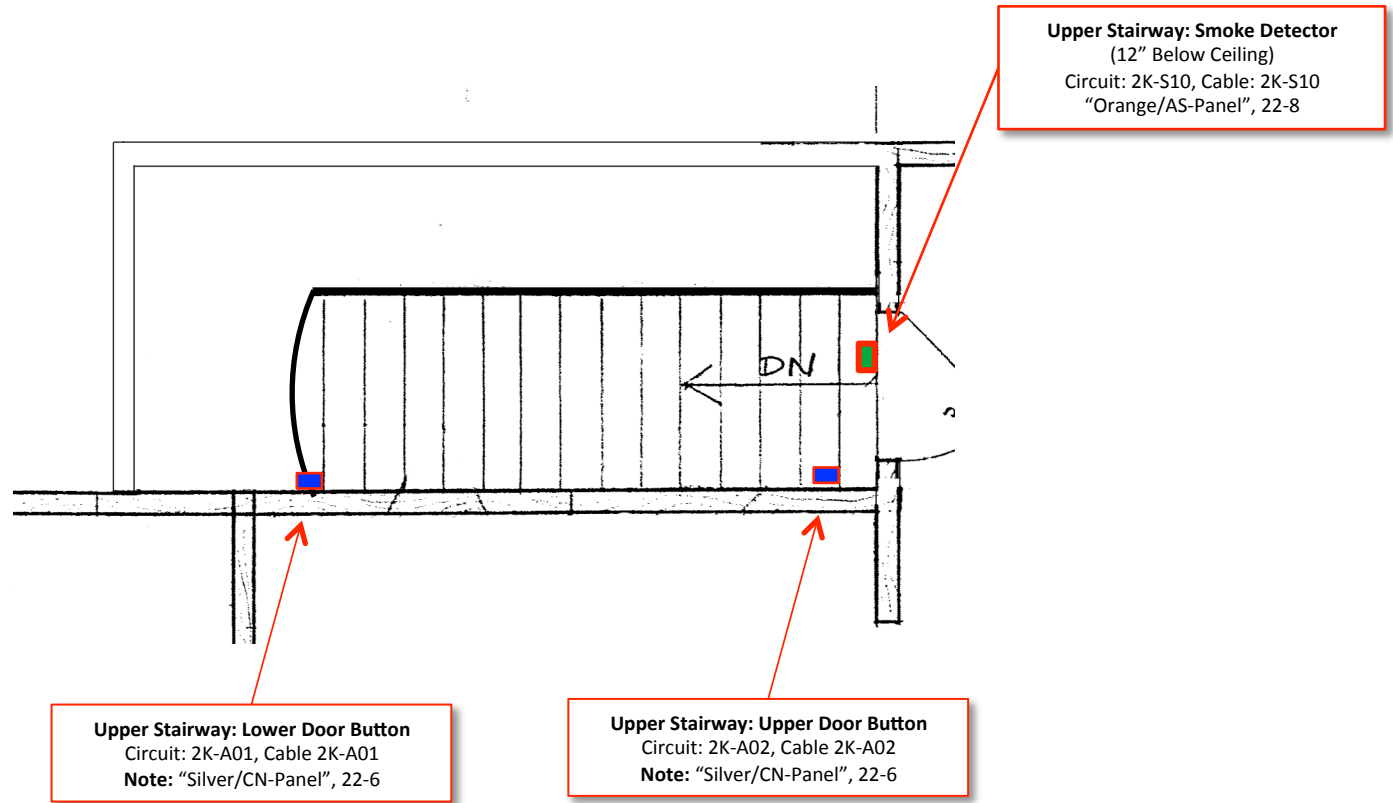


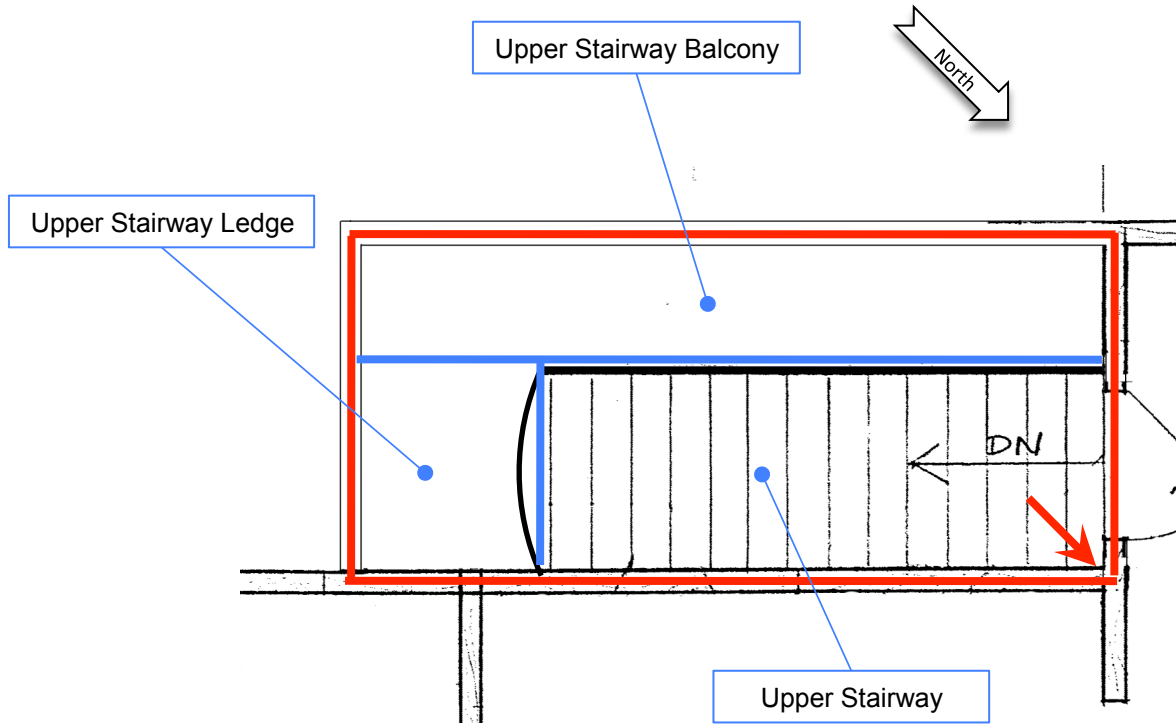
-  = In-Floor Feature Light (2K-06)
-  = Chandelier (2K-01)
-  = LED Tread Light (2K-T02)
-  = Ceiling Wash Lighting (2K-03)
(~30 lineal ft – low voltage)
-  = Cabinet Interior Lighting (2K-04)
(Low voltage)
-  = Standby Light




 = 15A Duplex (½ Switched) (2k-05)


Power





Region Definition

 = Region Boundary

 = Region Anchor Point (Corner)